

# (ADA) Handicap Accessible Units

## When Safety and Reliability Matter Most

The UltraLav ADA series is specifically designed to accommodate the unique needs of disabled users. UltraLav ADA units are not just ADA accessible, but ADA compliant meeting or exceeding the permanent structure criteria as specified by the American Disabilities Act. That's a big difference! Plus, everything you need to set-up including the railing/ramp assembly are totally self-contained. No need for separate storage units or another tow vehicle. This amazing engineering feat is accomplished by our exclusive and proprietary "one-touch" hydraulic trailer lowering system. The entire trailer smoothly and quietly lowers to the ground making long and cumbersome ramps obsolete.

The ADA series features the same pleasant interior styling as our other UltraLav trailers, but with the appropriate accommodations for disabled patrons.



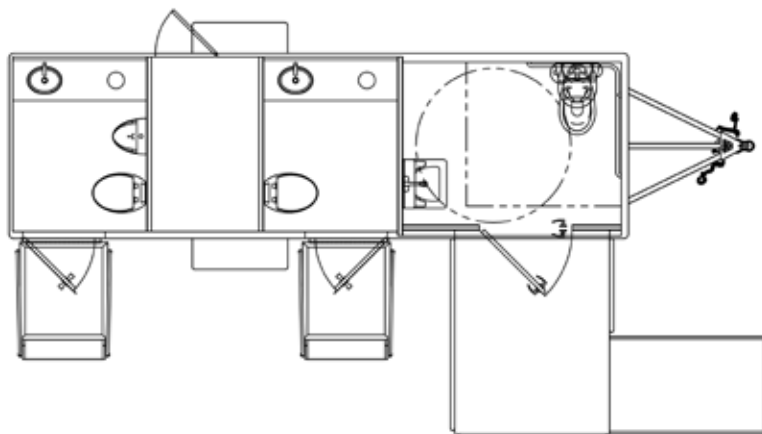
Shown with optional Hand Dryer  
Standard Features, Specifications & Dimensions subject to change without notice.



# UltraLav™

MOBILE RESTROOM TRAILERS

## (ADA) Handicap Accessible Units



### Optional Features:

- Fresh Water System (105 gal.)
- Stereo
- Mirror Frames
- Dyson Airblade™ Hand Dryer
- Interior Color Options
- Water Heater
- Roof Vents
- Crane Lifting Points
- Full Winterization Package

**Model: WC20-ADA-2**  
**6' W x 20' L**  
**Capacity: 360 Gallons**

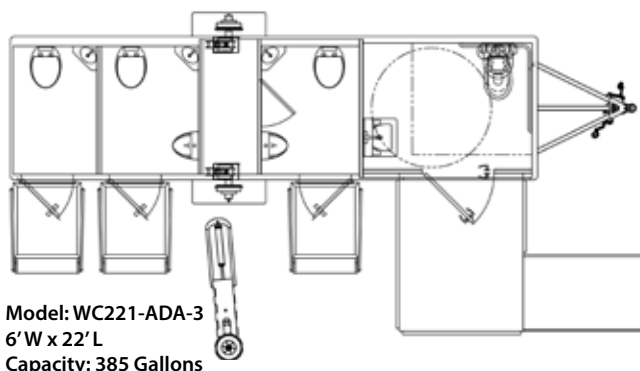
### Standard ADA Features Include:

#### INTERIOR

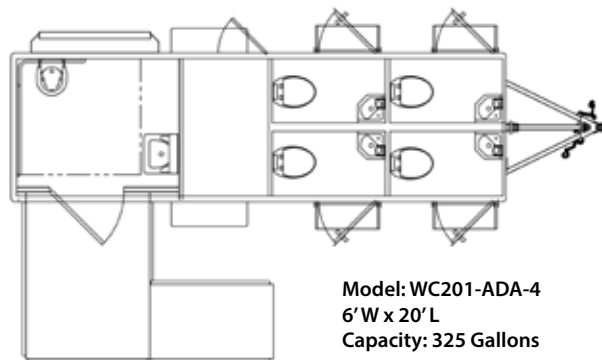
- High Clearance Porcelain Sink (ADA Compliant)
- Self-Closing Faucet With Front Push Operation
- Soap Dispenser
- Shatter Proof Mirror
- Ceramic China Bowl Toilet With Wall Mounted Push Button Flush (ADA Compliant)
- Toilet Paper Holder
- Paper Towel Dispenser
- Waste Basket
- Smooth, Mar Resistant Laminated Interior Walls
- 1-Piece, Non-Skid Rubber Floor
- 1-Piece Ceiling With Built In Air Supply & Air Return
- Wall Mounted Thermostat
- 36" W Entry Door (Exceeds ADA Requirements)
- Interior Turning Radius And Exterior Landing Turning Radius Exceeds ADA Requirements
- Hand Rails And Grab Bars Are 1/4" Stainless Steel (ADA Compliant)

#### EXTERIOR

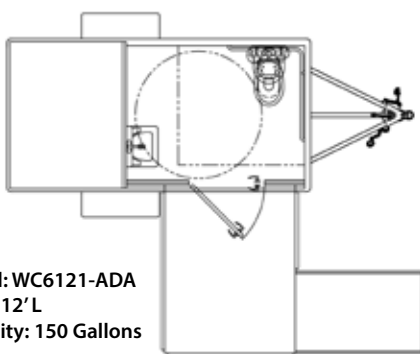
- LED Porch Light & Occupancy Indicator Light
- 3" Quick Connect Waste Tank Access Valve
- Waste Tank Level Indicator (Sight Glass)
- Fresh Water Hook-Up
- 120v/20 AMP Motor-Base Receptacle
- Roof Mounted Low Profile A/C with Heat Strip
- ADA Ramp System With 1/4" Stainless Steel Railings



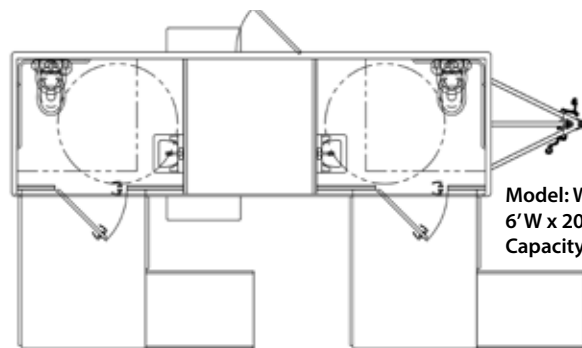
**Model: WC221-ADA-3**  
**6' W x 22' L**  
**Capacity: 385 Gallons**



**Model: WC201-ADA-4**  
**6' W x 20' L**  
**Capacity: 325 Gallons**



**Model: WC6121-ADA**  
**6' W x 12' L**  
**Capacity: 150 Gallons**



**Model: WC201-2-ADA**  
**6' W x 20' L**  
**Capacity: 200 Gallons**

Standard Features, Specifications & Dimensions subject to change without notice.

**Toll-Free: 877/301-3837**  
**Email: sales@ultralav.com**  
**Ultra Lav, P.O. Box 728, Elkhart, IN 46515**

**Phone: 574/264-9661 ext: 5204**  
**www.ultralav.com**



facebook.com/ultralav  
 twitter.com/ultralav

Want more information?  
 Snap this with your smart  
 phone to visit our website.



# UltraLav™

MOBILE RESTROOM TRAILERS



BY UNIVERSAL TRAILER